

TWP.46S.-RNG.26E.

NORTHWEST QUADRANT
LEE COUNTY, FLORIDA

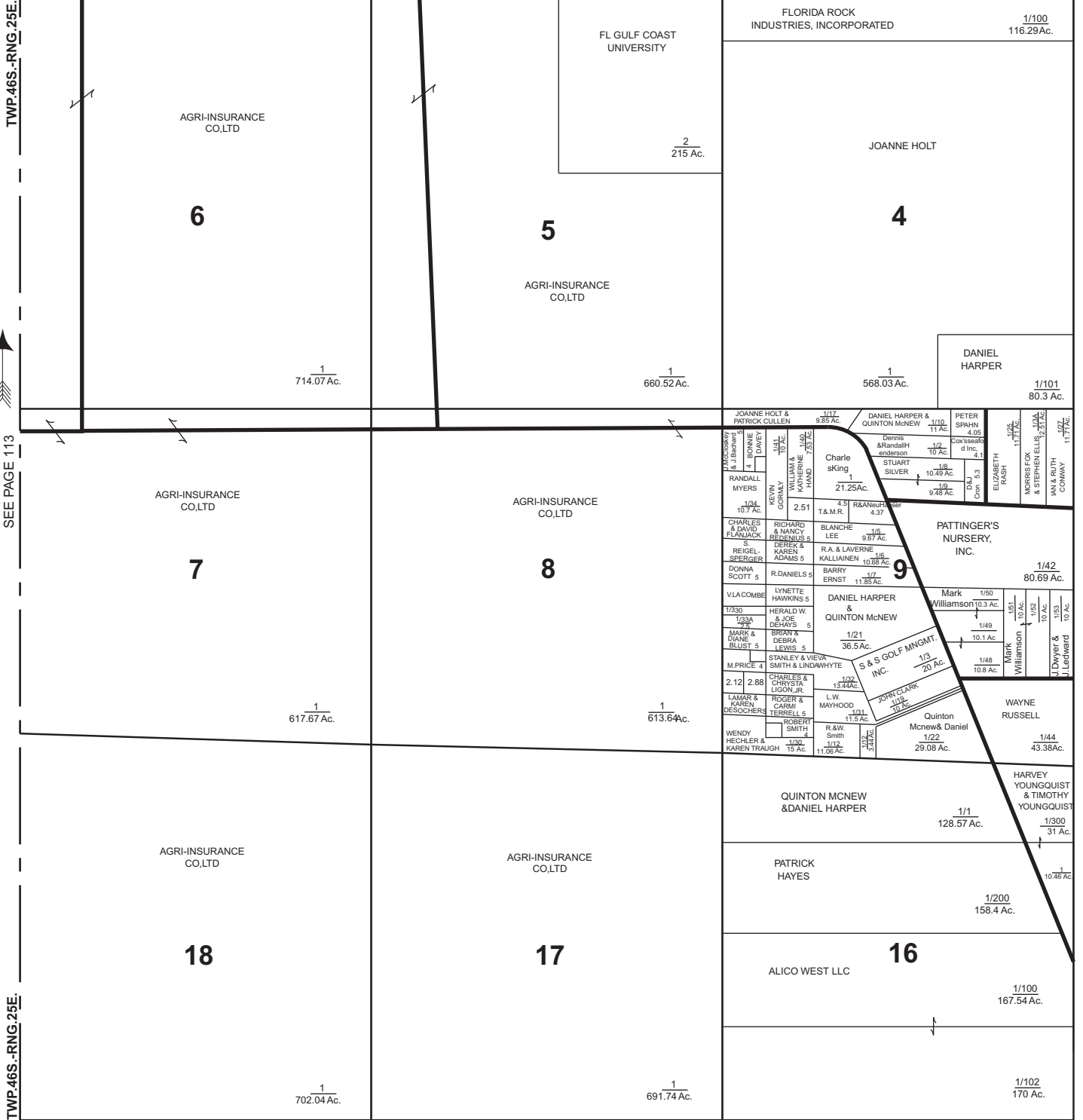
SCALE OF MILES 1/2



TWP.45S.-RNG.26E.

SEE PAGE 92

TWP.45S.-RNG.26E.



SOUTHWEST

© 1993,96, REV. 2002 FLORIDA PLATS

QUADRANT

SEE PAGE 118

OF

TWP.46S.-RNG.26E.